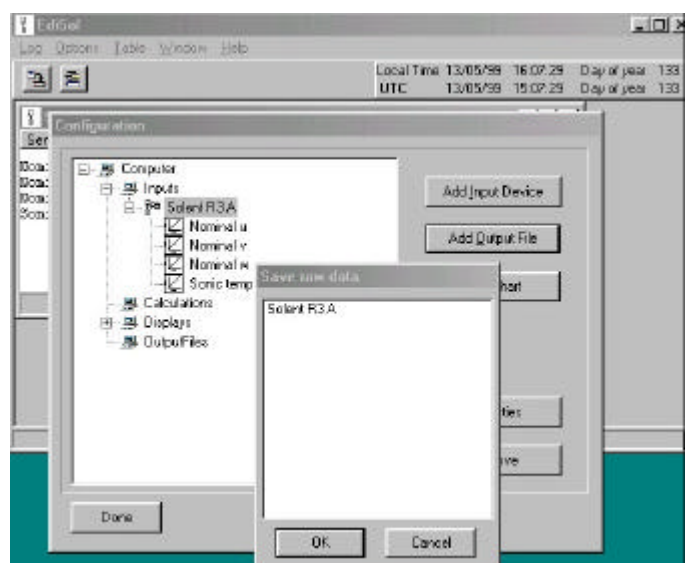
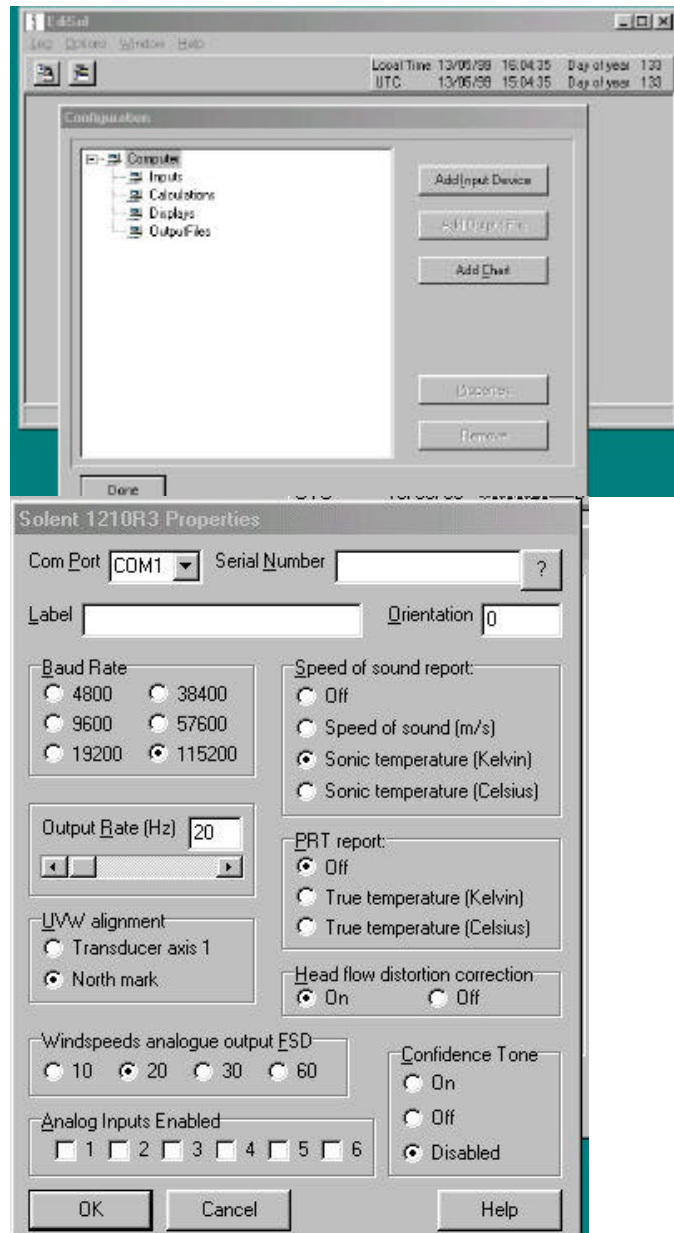


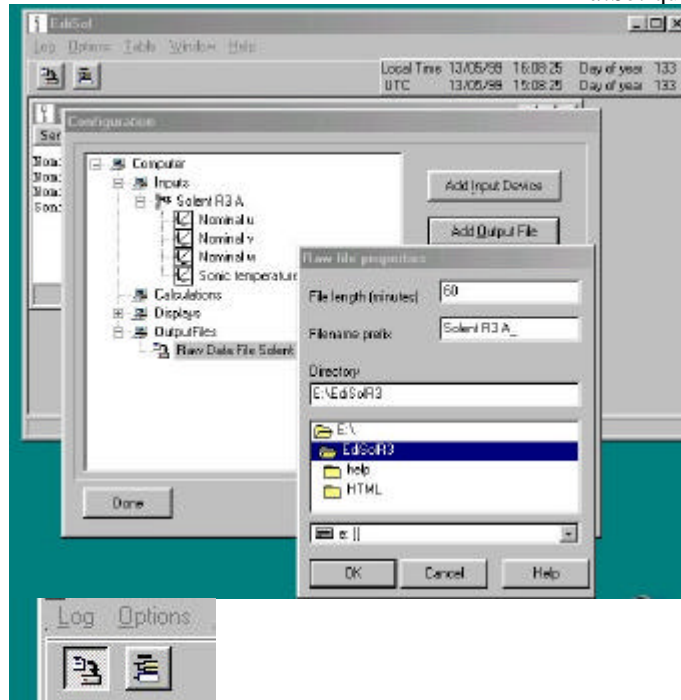
## EdiSol Quick Guide

- Double-click the *EdiSol* shortcut on the desktop and then select **Options** from the top menu
- You will then see the Configuration window
- Note that time, date and Julian Day are displayed continuously on the shortcut bar
- Selecting **Add Input Device** brings up a choice to use either a Solent A1012R2 or A1012R3 sonic anemometer. Choose **A1012R3**
- Most of the options are self-explanatory. For an *EdiSol* system which uses a LI-COR 6262 IRGA, make sure you select **2 Analog Inputs Enabled**. The **PROPERTIES** dialogue option allows you to select CALIBRATION and UNITS for the analogue inputs.
- All options selected will be remembered the next time you use the program.
- Choose to save the data by selecting **Add Output File** and selecting SolentR3A

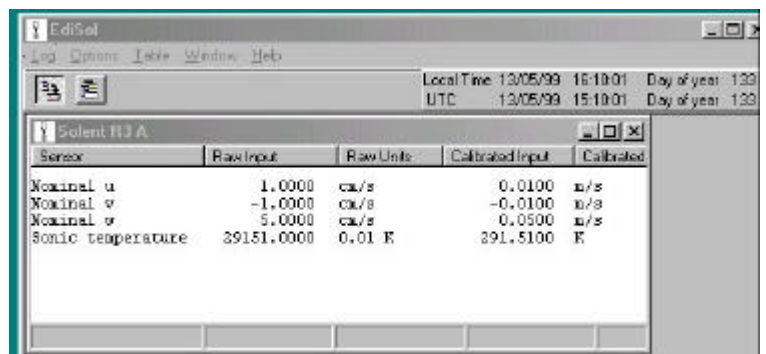


# EdiSol Quick Guide

- Choose where the raw data files are to be stored and the length of the sampling interval
- The options to graphically display the input data are temporarily disabled in this version of *EdiSol*.



- The two shortcuts control the logging and configuration windows. Note that the shortcut on the left toggles logging on and off
- Use either the shortcut icon or select **Start** under the **Log** menu to start logging data to the hard disk.



- *EdiSol* has on-line **Help** which can be called up from within the program.
- Since *EdiSol* is running under Windows, other programs can be running at the same time.

